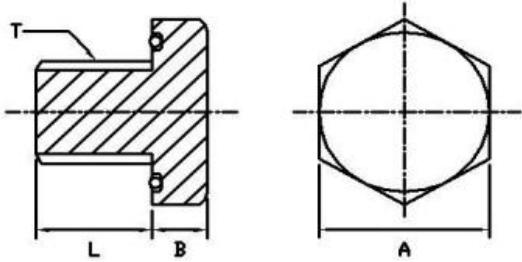


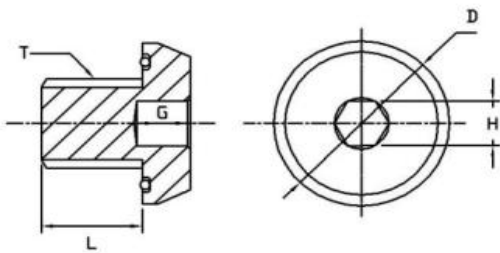
STOPPING PLUGS

Stopping plugs are used to blank off entries into housings and enclosures while maintaining Explosion proof certifications. Hexagonal Head and Domed head Stopping plugs, having metric threads are provided with 'O' ring provision to enhance ingress protection.

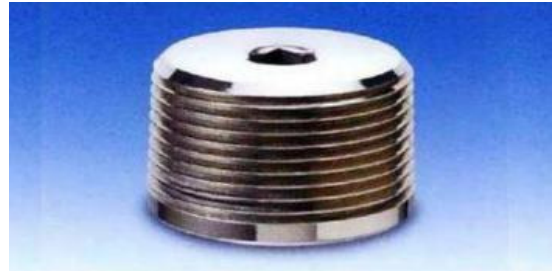
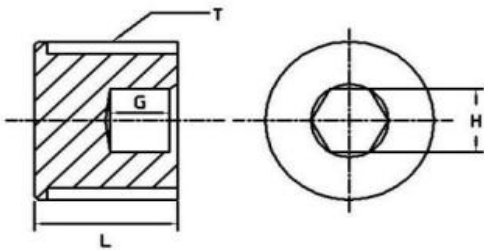
IME MODEL 86, HEXAGONAL HEAD PLUG



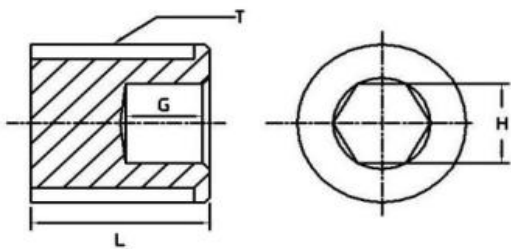
IME MODEL 87, EXTERNALLY ACCESSIBLE DOME PLUG



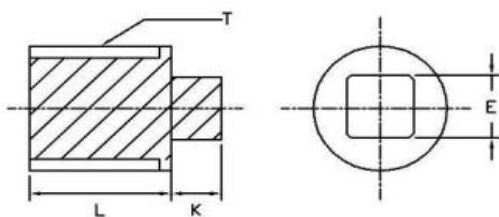
IME MODEL 88, INTERNALLY ACCESSIBLE PLUG



IME MODEL 89, EXTERNALLY ACCESSIBLE PLUG



IME MODEL 83, SQUARE HEAD PLUG



STOPPING PLUGS

DIMENSIONAL DETAILS

CODE	"T"	"L"	"B"	"H"	"A"	"D"	"E"	"G"	"K"
11	M16 x 1.5	0.67(17)	0.31(8)	0.31(8)	1.00(25)	1.00(25)	0.39(10)	0.31(8)	0.24(6)
12	M20 x 1.5	0.67(17)	0.31(8)	0.39(10)	1.18(30)	1.18(30)	0.47(12)	0.39(10)	0.24(6)
13	M25 x 1.5	0.75(19)	0.31(8)	0.47(12)	1.38(35)	1.38(35)	0.63(16)	0.47(12)	0.24(6)
19	1/2" NPT	0.79(20)	0.31(8)	0.39(10)	1.00(25)	1.00(25)	0.47(12)	0.39(10)	0.24(6)
20	3/4" NPT	0.87(22)	0.39(10)	0.47(12)	1.38(35)	1.38(35)	0.63(16)	0.47(12)	0.24(6)
21	1" NPT	0.94(24)	0.39(10)	0.55(14)	1.57(40)	1.57(40)	0.71(18)	0.55(14)	0.24(6)

Dimensions may vary from the above table depending on the material availability.
All dimensions are in inches (mm).

ORDERING INFORMATION

Model	Description														
83	Square Head Plug														
86	Hexagonal Head Stopping Plug														
87	Dome Head Stopping Plug														
88	Internally Accessible Stopping Plug														
89	Externally Accessible Stopping Plug														
	<table border="1"> <thead> <tr> <th>Code</th> <th>Material of Construction</th> </tr> </thead> <tbody> <tr> <td>T</td> <td>Stainless Steel 316</td> </tr> <tr> <td>A</td> <td>Aluminum 6082, Clear Anodized</td> </tr> <tr> <td>R</td> <td>Nickel Plated Brass</td> </tr> </tbody> </table>	Code	Material of Construction	T	Stainless Steel 316	A	Aluminum 6082, Clear Anodized	R	Nickel Plated Brass						
Code	Material of Construction														
T	Stainless Steel 316														
A	Aluminum 6082, Clear Anodized														
R	Nickel Plated Brass														
	<table border="1"> <thead> <tr> <th>Code</th> <th>Size and Type of Thread</th> </tr> </thead> <tbody> <tr> <td>011</td> <td>M16 x 1.5</td> </tr> <tr> <td>012</td> <td>M20 x 1.5</td> </tr> <tr> <td>013</td> <td>M25 x 1.5</td> </tr> <tr> <td>019</td> <td>1/2" NPT</td> </tr> <tr> <td>020</td> <td>3/4" NPT</td> </tr> <tr> <td>021</td> <td>1" NPT</td> </tr> </tbody> </table>	Code	Size and Type of Thread	011	M16 x 1.5	012	M20 x 1.5	013	M25 x 1.5	019	1/2" NPT	020	3/4" NPT	021	1" NPT
Code	Size and Type of Thread														
011	M16 x 1.5														
012	M20 x 1.5														
013	M25 x 1.5														
019	1/2" NPT														
020	3/4" NPT														
021	1" NPT														
	<table border="1"> <thead> <tr> <th>Code</th> <th>Certifications</th> </tr> </thead> <tbody> <tr> <td>E</td> <td>FM (US & CANADA)</td> </tr> <tr> <td>C</td> <td>ATEX & IECEX</td> </tr> <tr> <td>M</td> <td>FM (US & CANADA), ATEX & IECEX</td> </tr> <tr> <td>N</td> <td>None</td> </tr> </tbody> </table>	Code	Certifications	E	FM (US & CANADA)	C	ATEX & IECEX	M	FM (US & CANADA), ATEX & IECEX	N	None				
Code	Certifications														
E	FM (US & CANADA)														
C	ATEX & IECEX														
M	FM (US & CANADA), ATEX & IECEX														
N	None														
86	A 12 E ← Typical Model Number														

DIMENSIONAL DETAILS

